

**Whitehall Condominium**

2420 Beacon Street  
Brighton, MA 02467

I hereby certify that this plan shows the unit designation of the unit being conveyed and of immediately adjoining units and that it fully and accurately depicts the layout of the unit, its location, approximate dimensions, approximate area, main entrance, and immediate common areas to which it has access as built. I also certify that this plan was prepared in accordance with the rules and regulations of the Massachusetts registrar of deeds as amended January 1 1976.

**GUNDPARTNERSHIP**

Graham Gund  
Registered Architect  
November 29, 2006

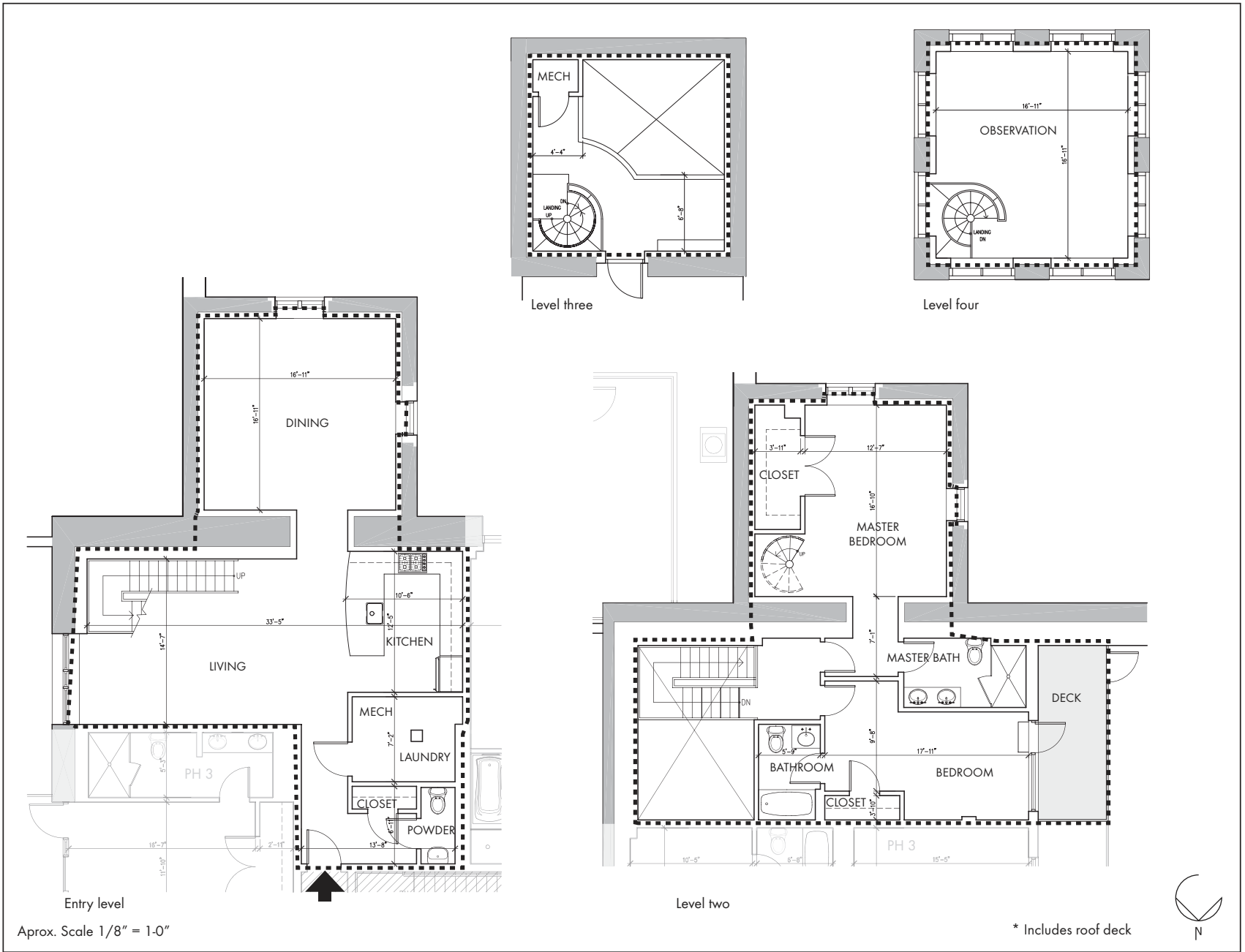
Unit: **PH 4**

Approximate Int. Area : 2329 sqft  
Approximate Ext. Limited Common Element Area: 687 sqft\*

**Drawing Key:**

- Line of Limit of Ownership:
- Common Area:
- Unit Entrance:
- Exterior Limited Common Element Area:

prepared by:  
**GUND PARTNERSHIP**  
47 THORNDIKE STREET  
CAMBRIDGE, MA 02141  
(617)250-6800



Approx. Scale 1/8" = 1-0"